



BD PrepMate™

Compact design delivers precise sample transfer

The BD PrepMate™ offers precise automation for BD's unique cellular enrichment process. It mixes, aspirates, and dispenses a defined volume of specimen.

- Eliminates manual cap removal, reducing the risk of contamination
- Handles up to 12 samples per cycle¹
- Intuitive user interface and small footprint
- Aliquots 8 mL from BD SurePath™ collection vials



The BD cell enrichment process

Centrifugal sedimentation through BD density reagent helps remove non-diagnostic components²

- Reduces non-diagnostic debris such as excess inflammatory cells, mucus, blood, and lubricants^{2,3}
- Minimises air-drying artifact and obscuring, overlapping cellular material⁴
- Easier visualisation of epithelial cells, diagnostically relevant cells and infectious organisms

Minimises unsatisfactory test results

- Compared to conventional Pap smears BD SurePath™ Liquid-based Pap Test reduces the number of unsatisfactory slides and ASCUS results, and provides higher HSIL+ detection.^{3,4}

Specimen handling

Specimen collection type	BD SurePath™ Collection Vial
On-board sample capacity	BD SurePath™ Liquid-based Pap Test: Up to 12 samples

Dimensions

Height	55.88 cm (22 in)
Width	35.56 cm (14 in)
Depth	58.42 cm (23 in)
Weight	36.3 kg (80 lbs)

Environmental requirements

Ambient temperature	18°C – 30°C (64.4°F – 86°F)
Ambient humidity	20% to 80% RH (non condensing)

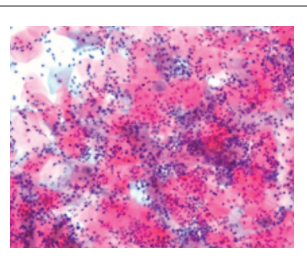
Electrical requirements

Rated voltage	100 – 240 VAC
Maximum current	2.5 A
Input line frequency	50 – 60 Hz

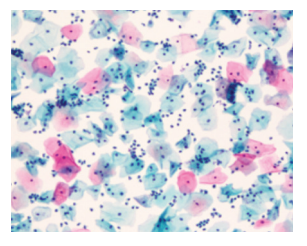
Part number

BD PrepMate™ automated accessory	491103
---	--------

Conventional Pap test obscuring inflammation



BD cell enrichment



After processing

BD SurePath Liquid-based Pap Test reduced inflammation

The BD cell enrichment process removes non-diagnostic components from specimens, minimising unsatisfactory test results.

References:

1. BD PrepMate™ automated accessory Operator's Manual [500005571]. Franklin Lakes, NJ: Becton, Dickinson and Company; 2020.
2. Nance KV. Evolution of Pap testing at a community hospital: a ten year experience. *Diagn Cytopathol.* 2007 Mar;35(3):148-53.
3. Sweeney BJ, Haq Z, Happel JF, Weinstein B, Schneider D. Comparison of the effectiveness of two liquid-based Papanicolaou systems in the handling of adverse limiting factors, such as excessive blood. *Cancer.* 2006 Feb 25;108(1):27-31.
4. Moriarty A, Clayton A, Zaleski S et al. Unsatisfactory Reporting Rates: 2006 Practices of Participants in the College of American Pathologists Interlaboratory Comparison Program in Gynecologic Cytology. *Arch Pathol Lab Med.* 2009;133(12):1912–1916

BD - Europe, Terre Bonne Park – A4, Route de Crassier 17, 1262 Eysins, Switzerland

bd.com

BD, the BD Logo, PrepStain and SurePath are trademarks of Becton, Dickinson and Company. ©2020 BD and its subsidiaries. All rights reserved. XEUR5424-20

